



# Balmoral 1

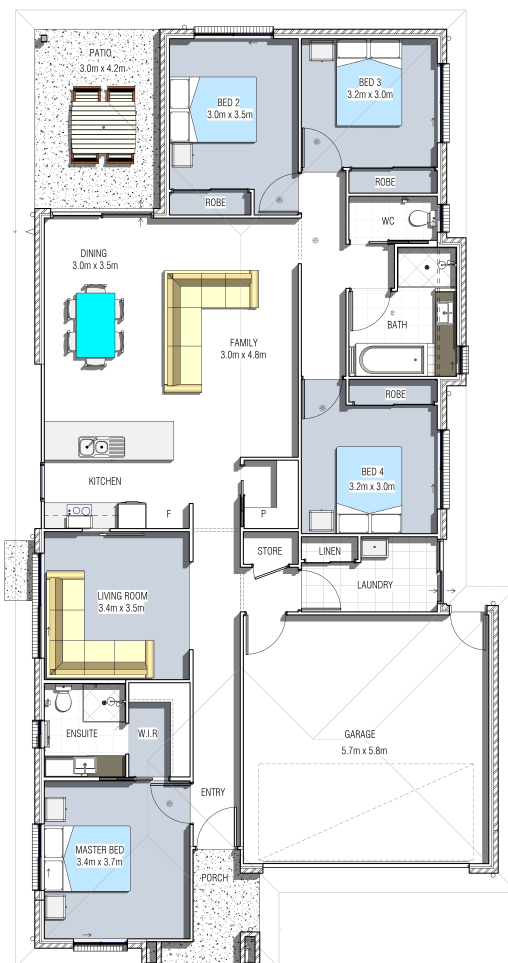
4  2  2  2 

## Features

- 4 Bedrooms with W.I.R's
- Ensuite to Master bedroom with W.I.R
- Open plan Kitchen/ Dining/ Family
- Additional Living
- Modern Kitchen with breakfast bar
- Separate Laundry
- Covered outdoor entertaining area
- Double lock up Garage with internal entry
- Ceiling fans throughout

## Dimensions

Total Area	207.50m <sup>2</sup>
Total Squares	22.33sq
House Width	11m
House Length	21.42m



Note: If image shows Colorbond roof and render this is extra from standard. External lights are non-standard. House illustration is an artist impression only. House size is only a guide, measurements may differ in actuality.

